

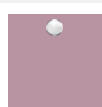
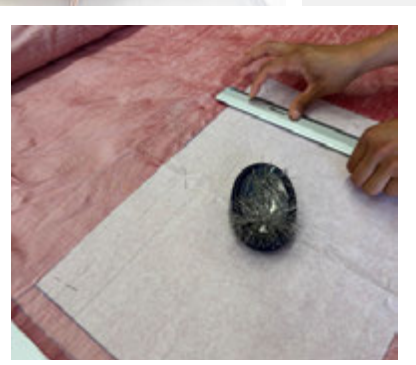
PRODUCTION SHEET



aracne

ADVOCATING THE ROLE OF SILK ART AND CULTURAL HERITAGE AT NATIONAL AND EUROPEAN SCALE

It can be a roomy, adjustable shopper, a practical backpack, or an elegant shoulder bag with a unique ruched bottom created by drawstrings.



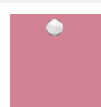
#B893A1



#A1757A



#CBC094



#D18293

SILK MULTI FUNCTIONAL SHOPPER 3

Design by

Prof. Sonja Šterman and Andreja Rudolf
University of Maribor – Faculty of Mechanical Engineering
Chair of Textile Materials and Design

Production coordinated by

Carmela Amodio – EVAlab – EVA social cooperative



aracne

ADVOCATING THE ROLE
OF SILK ART AND CULTURAL
HERITAGE AT NATIONAL
AND EUROPEAN SCALE

Three bags in one

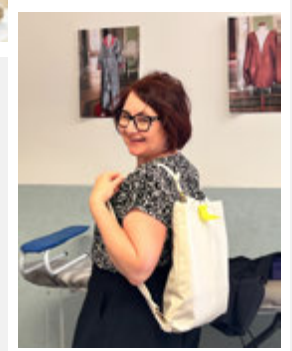
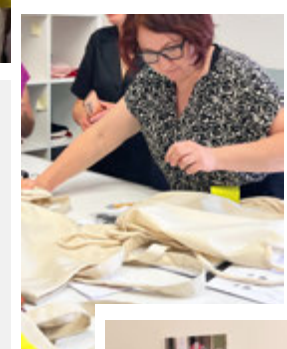
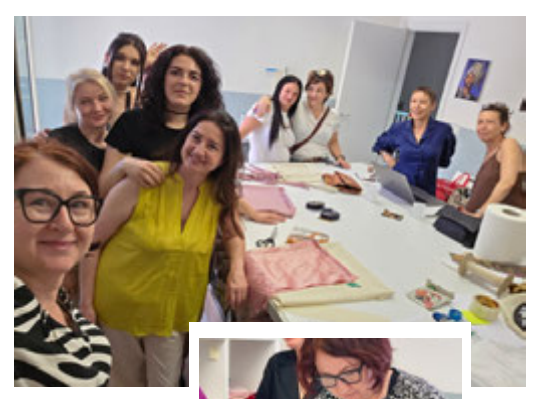
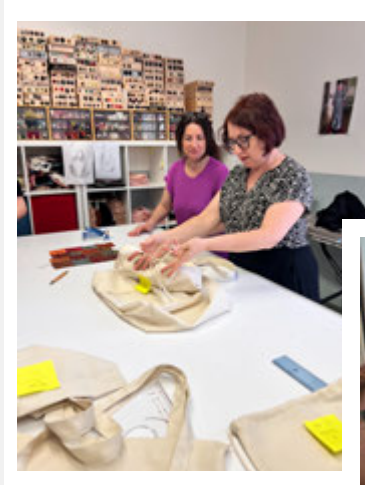
This bag was **created at the EVALab workshop** during the training organised from June 2–6, 2025 by the University of Maribor as part of the collaboration with EVA social cooperative within the Aracne project.

Two different fabrics were used, both donated by Gucci to EVAlab through the **Gucci Up** program, which supports the creative reuse of production surplus for social purposes: a thick, durable **wool** fabric and a lighter, iridescent **silk shantung**.

During the workshop the team gradually developed and improved the prototype of the **expandable tote bag** designed by Sonja Šterman.

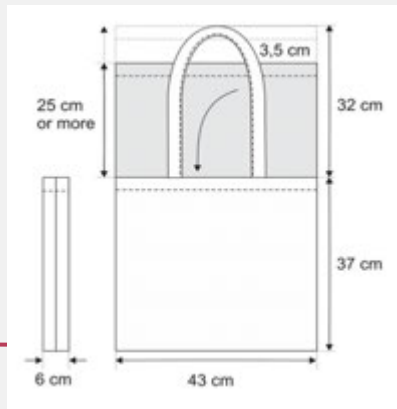
Rings were added to the corners of the bag, and additional straps equipped with carabiner hooks, to allow the bag to be easily transformed into a practical **backpack**.

Finally, by turning the bag inside out, tightening the drawstrings at the bottom, and folding the tote bag inward, the shopper becomes a small crescent-shaped **shoulder bag** – compact, stylish, and perfect for any occasion.



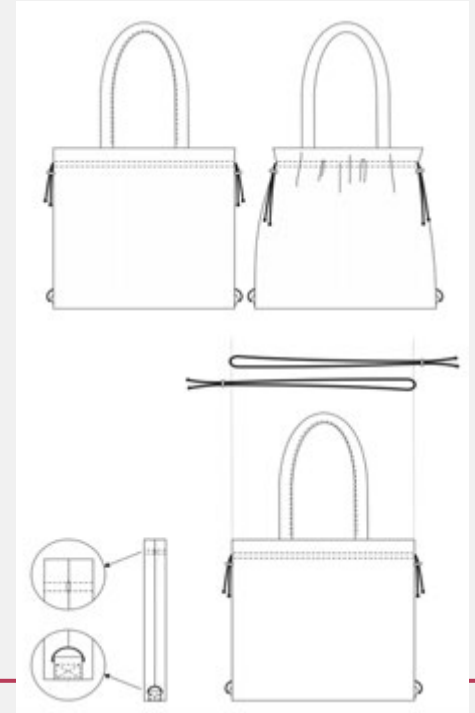
SILK MULTIFUNCTIONAL SHOPPER 3





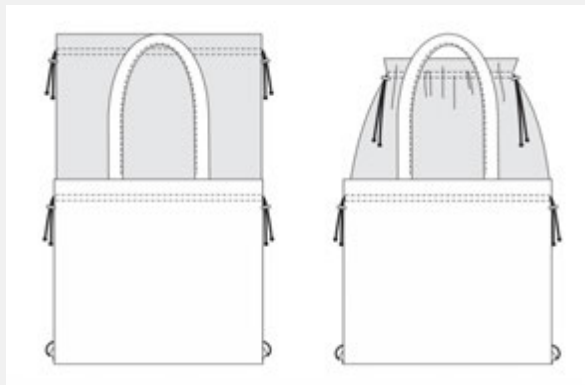
1. Basic measures

The top can also be longer (25-32 cm), because if we pull it together with the drawstring, it will be slightly shorter. That's why there are two lengths in the drawing above — the longer one is marked with a dotted line.



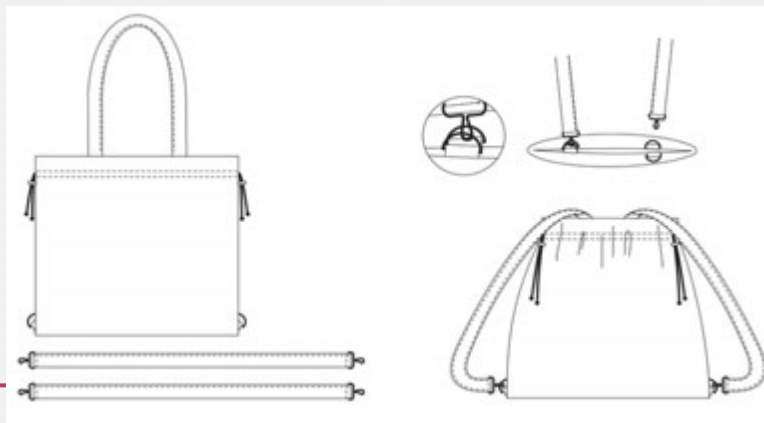
2. Simple use of the Multifunctional Bag

The shopper can be closed at the sides with a drawstring and a stopper. The ends of the drawstrings can be tied in knots, or they can be finished with metal tips that match the style of the drawstring stoppers



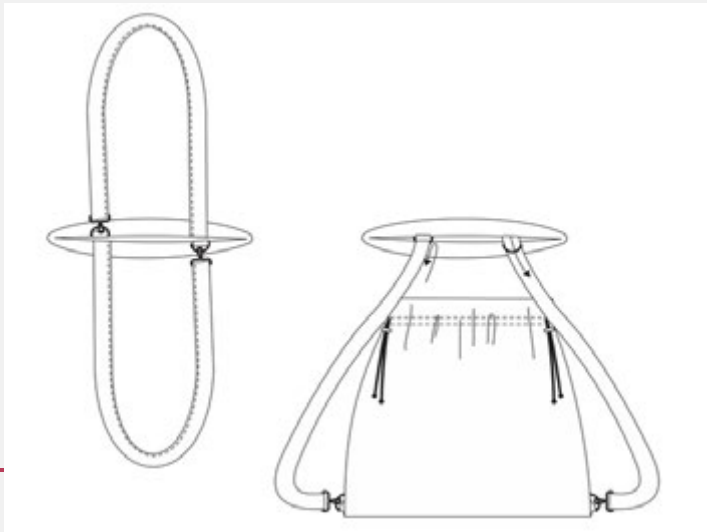
3. More room for shopping

An additional possibility to extend the shopper with an inner part that is sewn into the upper edge together with the shoulder straps.



4. Rucksack

Additional shoulder straps make it possible to carry the shopper as a rucksack. D-rings with webbing straps are sewn under the fixed shoulder straps on the sides and along the length of the bag. These D-rings are securely fastened and reinforced. If two additional shoulder straps are attached to the D-rings with carabiners, the shopper can be worn as a rucksack.

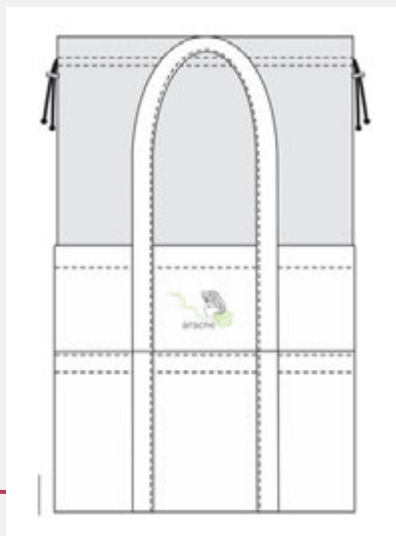
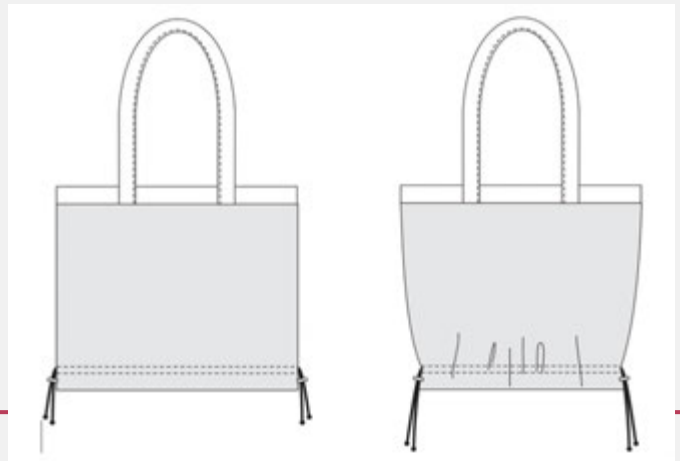


5. Rucksack alternative

The same effect could be achieved if each of the existing shoulder straps were sewn on one side only and attached on the other side to a D-ring on the opposite side or to a D-ring along the length of the bag. In this case, no additional shoulder straps are required.

6. Shoulder bag

The multifunctional shopper can also be turned inside out, creating a more dynamic shape. If the lining of the extended section is colourful and patterned, the shopper can quickly take on a very different look compared to a standard tote bag.



7. Customisation

The shopper can also be fitted with shoulder straps that can be attached from the outside. It can also be customised with an outside pocket and embroidery, as shown in the picture.

SILK MULTIFUNCTIONAL SHOPPER 3



aracne

ADVOCATING THE ROLE OF SILK ART AND CULTURAL HERITAGE AT NATIONAL AND EUROPEAN SCALE

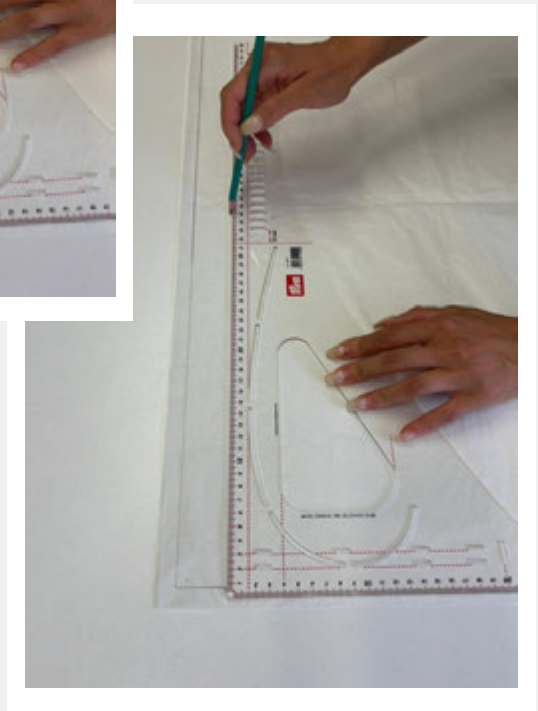
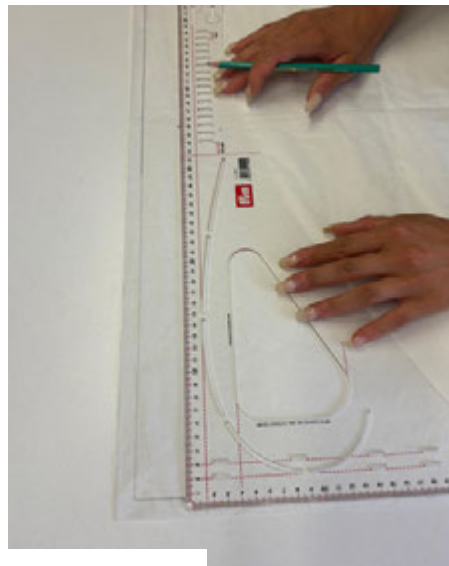
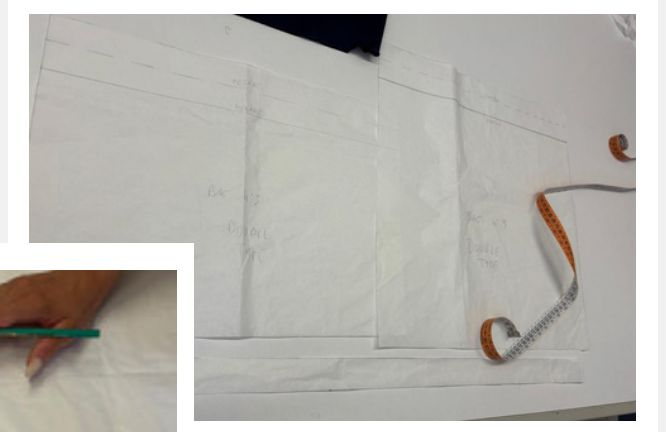


STEP 1 Pattern making

In this phase, the initial sketch is analysed and translated into a pattern.

The technical process involves **outlining the perimeter** of each individual component of the bag design, accurately **defining the measurements** needed to create a well-proportioned, functional, and ergonomic product. The pattern must be **precise and detailed** to ensure it is easy to interpret during the following construction stages.

This model requires the creation of **two separate patterns**: one for the **outer fabric** and one for the **inner lining**.



SILK MULTIFUNCTIONAL SHOPPER 3



aracne

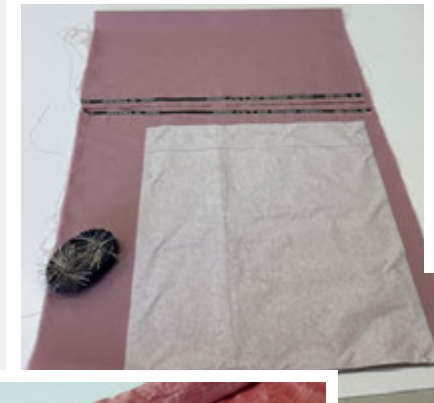
ADVOCATING THE ROLE
OF SILK ART AND CULTURAL
HERITAGE AT NATIONAL
AND EUROPEAN SCALE



STEP 2 Pattern placing

The placement phase is equally important. This step involves **positioning the pattern onto the fabric**, carefully following these steps:

- Lay the fabric flat, making sure it is free of wrinkles; if necessary, iron it beforehand.
- Pin the pattern securely onto the fabric to keep it stable during the tracing process.
- Trace the outline of each piece using tailor's chalk or a disappearing fabric pen.
- Leave a 2 cm seam allowance around each piece.



SILK MULTIFUNCTIONAL SHOPPER 3



aracne

ADVOCATING THE ROLE OF SILK ART AND CULTURAL HERITAGE AT NATIONAL AND EUROPEAN SCALE

STEP 3 Cutting and assembling

After the fabric has been laid out, it's time to **cut the individual pieces**.

Each piece is cut and passed on for assembly. This stage is more complex and requires time and precision.

Then, you need to choose the right color and thickness of cotton thread for stitching, as well as the appropriate sewing machine needle size —each fabric requires a different thickness.

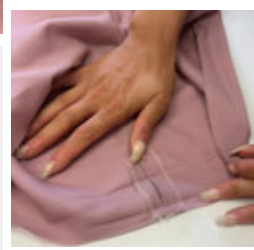
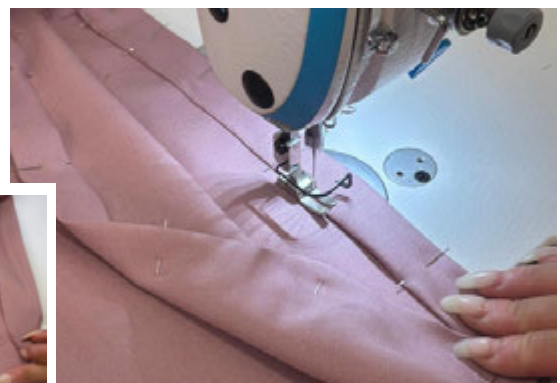
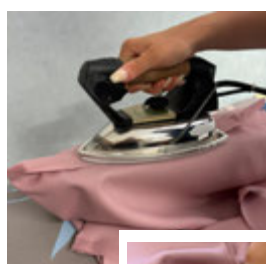
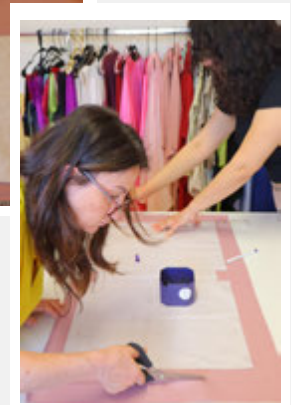
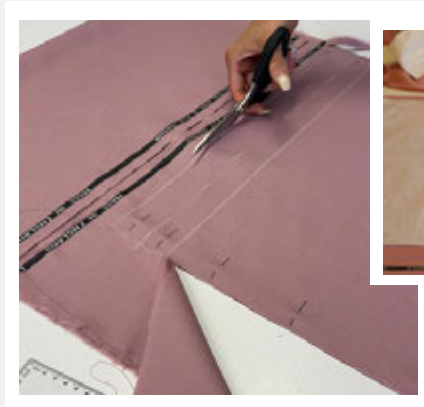
Now you can begin **sewing the bag components**.

The Multifunctional Bag is made of two main parts:

- a **rectangular bottom section**, where the handles are attached;
- a **rectangular top section** made of a different fabric, which covers the bottom and transforms the bag into a different model.

Start by sewing the bottom part: join the sides, and before stitching the corners, insert the D-rings for the shoulder strap.

For the top section, fold the fabric edge and topstitch it to create a casing for the drawstrings.



SILK MULTIFUNCTIONAL SHOPPER 3



aracne

ADVOCATING THE ROLE OF SILK ART AND CULTURAL HERITAGE AT NATIONAL AND EUROPEAN SCALE

STEP 3

...

Next attach the **handles** to the top part, sewing two more D-rings onto them — these will be used to fasten the shoulder strap.

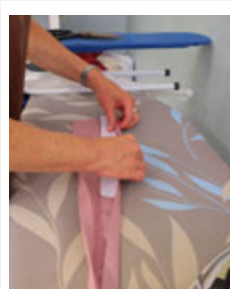
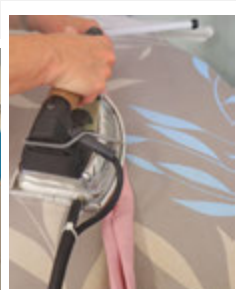
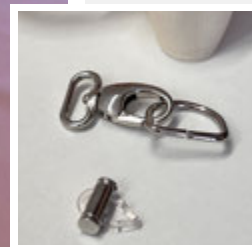
Then **sew the top section**, starting with the sides. As done before, fold and stitch the fabric to create the drawstring channel.

At this point, **join the two parts** by attaching the top section to the edge of the bottom.

To finish, **make the removable straps**.

Place the pattern on the fabric, cut out the pieces, and stitch the sides—leaving the ends open. Insert the clasps at both ends.

The shopper is now complete.



EVALab. Who we are

EVALab is an **ethical tailoring workshop** that provides specialized training and legal employment to **women who have survived male violence** and are seeking economic independence.

The workshop adopts **fair labor standards** that respect the pace and challenges of the women involved, offering a safe and supportive environment for professional growth.

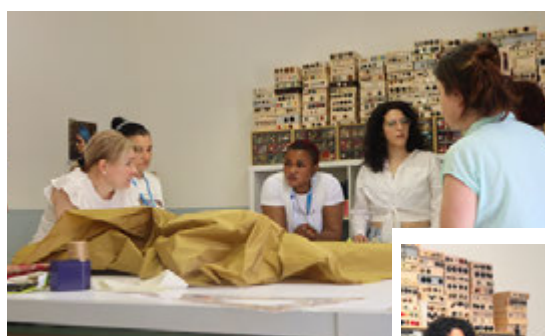
Founded in 2020 in a **property confiscated from organised crime**, EVALab operates in an area marked by severe socio-economic and cultural hardship, with the aim of promoting legality, social inclusion, and local development.

All garments and accessories are **handmade using high-quality surplus fabrics** — particularly fine **silks** that reinterpret and innovate the textile traditions of **San Leucio**. The production process is environmentally conscious at every stage, focusing on sustainability, waste reduction, and reuse.

EVALab collaborates with leading institutions such as the Academy of Fine Arts of Naples, the San Carlo Theatre, and the Royal Palace of Caserta, as well as with companies like Gucci, which supports the workshop through its **Gucci Up** program by donating surplus fabrics for creative reuse with a strong social impact.

EVALab is an initiative of the social cooperative EVA, which operates in the Campania region managing four **anti-violence centres**, three women's **shelters**, and three **work reintegration projects** for women emerging from situations of violence — one of which is **EVALab** itself. The cooperative also runs a **nursery for children aged 0 to 3**, to support working mothers, and a **youth center** aimed at combating educational poverty and preventing gender based violence, welcoming girls and boys aged 6 to 17.

Some of these services are hosted in properties confiscated from organised crime and repurposed for social use — a concrete way of **promoting legality and local, sustainable development** in a region often known primarily for the presence of the Camorra.



Some photos of the **EVALab** team with **Sonja Šterman** and **Andreja Rudolf**, lecturers from the University of Maribor, during the training organised as part of the Aracne project at EVALab headquarters from 2 to 6 June 2025, during which the **Silk Multifunctional Shopper 3** was finalised.

Contacts

EVALab project coordinator
Daniela D'Addio
d.daddio@cooperativaeva.com

EVA communication officer
Cristiana Scoppa
cristiana.scoppa@cooperativaeva.com

